




 @SQUAREMILE_COM

 FACEBOOK.COM/SQUAREMILEUK

 SQUAREMILE_COM

square mile



SQUARE MILE IS THE LUXURY LIFESTYLE MAGAZINE FOR THE CITY OF LONDON

Contents

About square mile

- + 03 Mission statement
- + 04 Brand overview
- + 05 Print overview
- + 08 Website overview
- + 09 Newsletter overview
- + 10 Social Media overview

Advertising solutions

- + 11 Competition package
- + 12 Golf section sponsorship
- + 13 Special section sponsorship
- + 14 Advertorials
- + 15 Homepage takeovers

Further information

- + 16 Get in touch

square mile

PRICE IS WHAT YOU PAY. VALUE IS WHAT YOU GET.

WARREN BUFFETT

LONDON'S SQUARE MILE is the most affluent financial centre in the world. More than \$1.7 trillion is traded here every day on the foreign exchange market alone – twice that of Wall Street and six times that of Tokyo.

The term 'Square Mile' encapsulates London's financial hub – the place, the people and the money. Once restricted to the traditional City of London, this amorphous region has expanded east to include Canary Wharf and west to Mayfair.

Over the last 15 years, **square mile** has become the number-one lifestyle brand for this affluent area. With a magazine, website, newsletter and reader events, **square mile** has the attention and trust of the City.

thread/needle
MEDIA



Brand

OVERVIEW

Reader Profile

- + Age: 30-50
- + Gender: 78% male / 22% female
- + Average household income: £250,000 pa including bonuses

Magazine

- + Circulation: 58,728
- + Readership: 117,456
- + Frequency: Monthly

Website

- + URL: squaremile.com
- + Average unique visitors per month: 101,000
- + Average page views per month: 624,000
- + Average CTR since launch: 0.25%
- + Average dwell time: 2 mins 8 secs

Newsletter

- + Frequency: Weekly
- + Average database size: 20,000
- + Average open rate: 28%

Social

- + Facebook squaremileuk: 36,792 likes
- + Twitter @squaremile_com: 17,500 followers
- + Instagram @squaremile_com: 13,600 followers



Print

DISTRIBUTION

SINCE 2005, **square mile** has steadily been building up its core database of both individual and corporate subscriptions. As **square mile** is a controlled circulation magazine, we have also been able to quickly adapt our distribution model to be in tune with the new working landscape. Many of **square mile**'s office subscriptions have been diverted to private homes – and the promotional Tube handouts have been replaced with in-home distribution within affluent postcodes in Zone 1.

- Direct to homes [including 23,728 named subscribers]: 38,728
- Corporate subscriptions [financial key workers such as traders]: 10,000
- Hotels, bars and members' clubs: 6,000
- Luxury retail: 4,000

Circulation	58,728
Readership	117,456

Print

square mile magazine uniquely and directly targets the people that work, play and spend in the City of London. It captures the imagination, acclaim and, most importantly, the time of this hard-to-reach demographic.

We have achieved this loyalty by creating a proposition unlike any other: a luxury lifestyle monthly focussed precisely on the interests and attitudes of those in City. Through advertising in **square mile** you receive rare access to this readership – one of the wealthiest in the world.

With contributions from a broad church of writers – from watch guru Robin Swithinkbank to design expert Josh Sims to renowned petrolhead Jeremy Taylor, you'll be featured alongside relevant, engaging and beautifully designed editorial.

The City of London is one of the most exciting, competitive and vibrant places on Earth. **square mile** is its magazine.



square mile

thread/needle
MEDIA

THE LONGER
I GO ON, THE
MORE I AM
AWARE OF
THE **POWER**
OF FINANCE.

JUSTIN WELBY

MEDIA INFORMATION



square mile

Print

DISPLAY RATE CARD

Front Cover Gatefold	£39,995
Back Cover Gatefold	£34,995
Inside Front Cover DPS	£24,995
Outside Back Cover FP	£19,995
DPS	£12,995
FP	£6,995
Half Page	£3,995
Quarter Page	£2,495
Essentials	£995

thread/needle
MEDIA

Website

squaremile.com is an online hub for the City. The website performs a curating function: serving up the best in luxury, investment and interviews to the City's affluent executives.

The site is home to all of our exclusive front cover articles and often houses extra material and behind-the-scenes footage. It's also where we host competitions with our commercial partners gaining thousands of entrants - and reader data - every month.

Our readers can register here for exclusive events (held in partnership with our most loyal clients) - and of course subscribe to both our print magazine and e-newsletters.

SQUAREMILE.COM

Unique Visitors p/m	101,000
Pageviews p/m	624,000
CTR avg since launch	0.25%
Dwell time avg	2m 57s



square mile

RATE CARD

HOMEPAGE/CHANNEL TAKEOVER

Per week	£6,995
----------	--------

ROS IMPRESSIONS

MPU, Double MPU, Leaderboards	£28 CPM
Epic Parallax	£50 CPM

COMPETITION PACKAGE

One month	£4,995
-----------	--------

DIGITAL ARTWORK CREATION

Static banner creation 2 x sizes, 3 x variants	£600
---	------

Newsletters & solus mailers

square mile's weekly e-newsletter provides insight and inspiration in equal measure: the former into the world's most exclusive style and luxury, and the latter for events and activities within the City and beyond.

The two Double MPU ad banners offer our most direct digital ad solution yet. With ever improving open rates and CTRs, the latest square mile newsletter designs are proving a lasting success with our City audience.

For exclusive share-of-voice, we also offer a limited number of solus mailers for a premium cost.

NEWSLETTERS

Average database size	20,000
Average open rate	28%
Double MPU ad size Displays at 300x600 approx.	640 x 1280

RATE CARD

1 x ad	£1,995
3 x ads	£4,995
5 x ads	£6,995
Solus newsletter	£8,495

MEDIA INFORMATION



Social

square mile's social media channels target readers in the City of London - as ever, we strive for quality over quantity, and pride ourselves on engaged and relevant social media followers, organically grown from an eclectic range of relevant content.

AUDIENCES

Twitter	17,500
Instagram	13,600
Facebook	36,792



ADVERTISING SOLUTION

Competition Package

Competitions are one of the most direct ways to engage with our readers and also provide clients with a unique opportunity for data capture. Promoted in the magazine and via social media, the competitions are hosted on **squaremile.com**.

What the package includes

- Promotion in print in **square mile**
- Featured in a **square mile** weekly newsletter
- Social media promotion
- Hosted on **square mile's** competition channel.

RATE CARD

Competition package	£4,995
Competition gold package Includes full page in magazine	£8,495

square mile



Newsletter slot

Facebook post

Twitter post

Competition print listing

squaremile.com competition listing

ADVERTISING SOLUTION

Sponsorship of the Golf section

square mile is the only luxury lifestyle magazine with a regular and comprehensive golf section. Edited by our in-house golf expert Ben Winstanley, alongside regular contributions from *Golf News*' Nick Bayly, it covers the players, the courses and the equipment that are changing the game. The section also features the best resorts and regions for golfers - including our annual square mile Golf Awards at the end of every year.

GOLF SECTION example



What the package includes

- Opening single page advert
- Logo on the golf opener
- Double page spread advert
- Closing single page advert

RATE CARD

Sponsorship of the Golf section	£29,995
---------------------------------	---------



ADVERTISING SOLUTION

Special section sponsorship

Each issue, **square mile** publishes a special section dedicated to a specific theme. These include: Wealth [pictured]; Best of British; Style [SS & AW]; Land, Sea & Air; Adventure; Technology; Watches; and Xmas.

RATE CARD

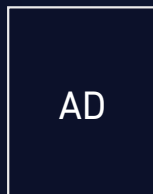
Sponsorship of a Special section **£29,995**

What the package includes

- Opening single page advert
- Logo on the opener
- Double page spread advert
- Closing single page advert



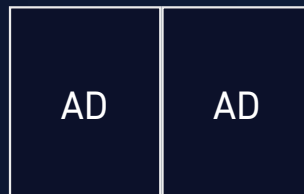
WEALTH SECTION example



Opening AD



Opener + Logo



Opening DPS Advert



3rd party AD



Editorial

Editorial



Editorial

Editorial



Other AD



Editorial



Editorial

Editorial



Editorial



Other AD

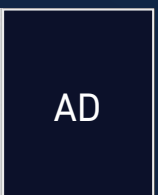


Editorial

Editorial



Editorial



Closing AD

ADVERTISING SOLUTION

Advertorials

Let us help tell your story to our readers. Advertorials - labelled as 'Promotion' in print - are a way to reach our audience via a softer sell. If your client, product or service can't be communicated through a branding advert, advertorials are a great solution with which you can educate our discerning readership.

Double page spread

RATE CARD

Full page	£9,095
Double page spread	£16,895



square mile

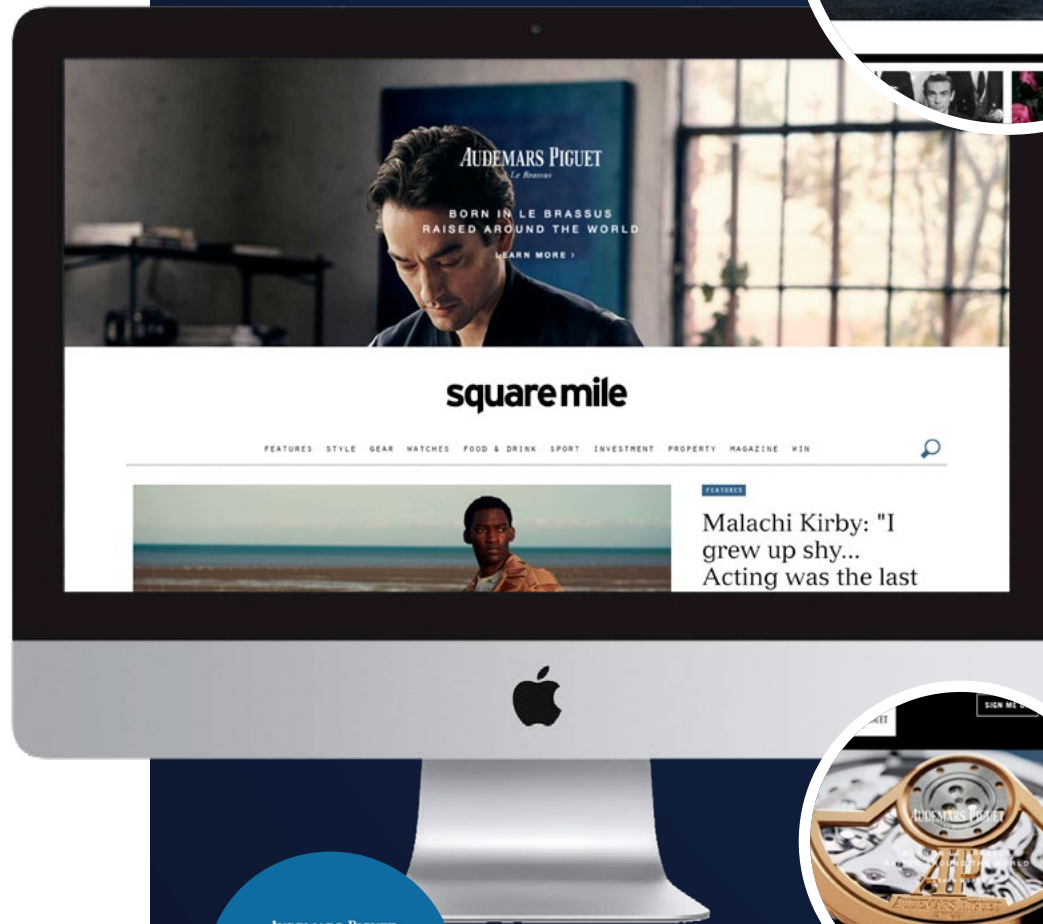
Full page

thread/needle
MEDIA

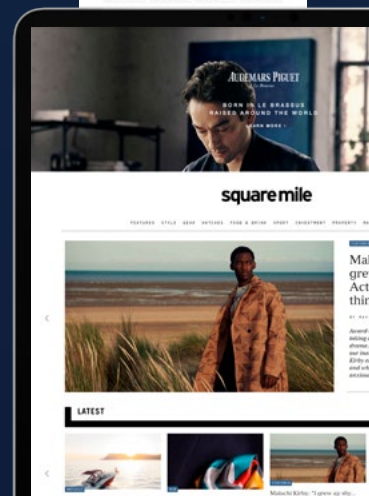
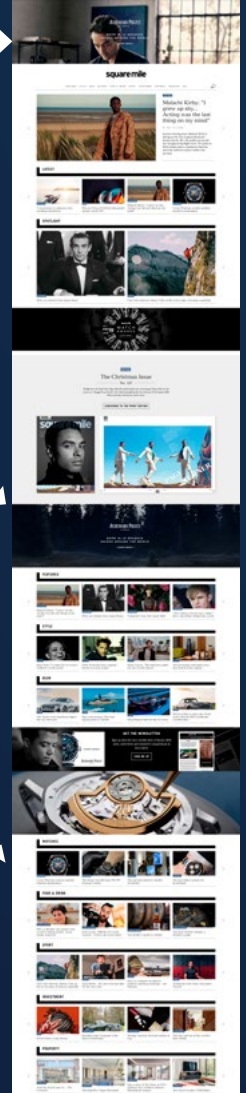
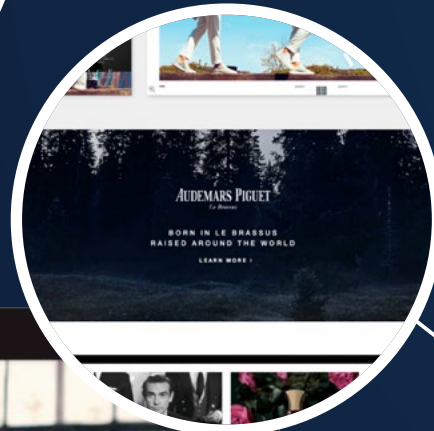
ADVERTISING SOLUTION

Homepage takeover

A piece of prime real estate on **squaremile.com**, the homepage takeover is a chance to deliver a strong, highly visual brand message next to the brand's hero online content. The bespoke parallax integration results in high impact and impressive click-through rates.



AUDEMARS PIGUET
Le Brassus
BORN IN LE BRASSUS
RAISED AROUND THE WORLD
LEARN MORE >



RATE CARD

Homepage Takeover

£6,995

square mile

Get in touch

ADVERTISING ENQUIRIES

advertising@squaremile.com

PRESS ENQUIRIES

marketing@squaremile.com

EDITORIAL ENQUIRIES

editorial@squaremile.com

CREATIVE SERVICES

creative@squaremile.com

ADVERTISING COPY PRODUCTION

production@squaremile.com

SUBSCRIPTIONS

subscriptions@squaremile.com

RECRUITMENT

jobs@squaremile.com

 @SQUAREMILE_COM

 FACEBOOK.COM/SQUAREMILEUK

 SQUAREMILE_COM

thread/needle
MEDIA